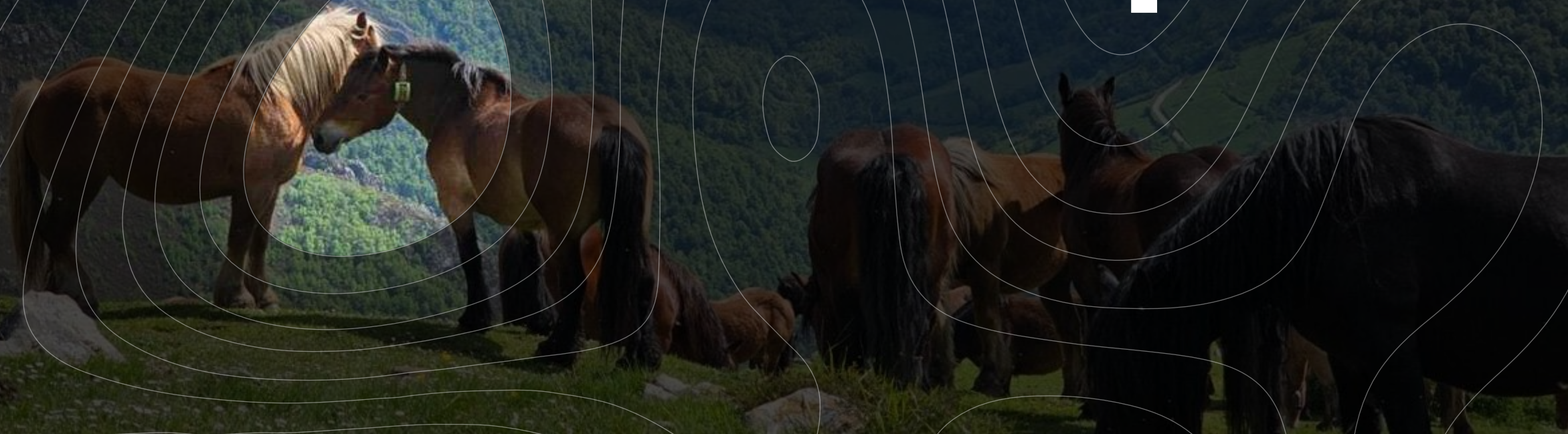


Digitanimal | Dossier 2026

# Intelligence for livestock management

# Livestock farming has never been simple



 **For years, technology has looked at farming from the outside**



**For years, technology has looked at farming from the outside**

**promising solutions that do not  
always fit the realities of  
livestock farming**



**Where do we come  
from?**

# Digitanimal was born in the field



built around  
**real farming and**  
real-world challenges





We are a company specialized in

# **DIGITAL SOLUTIONS FOR LIVESTOCK MANAGEMENT**

founded in 2015



## DIGITAL SOLUTIONS FOR LIVESTOCK MANAGEMENT

### PRECISION TECHNOLOGY

We develop easy-to-implement solutions that provide farmers with reliable data about their livestock and land.

### MORE PRODUCTIVE MANAGEMENT

We empower farmers' decision-making with data that drives more **productive, profitable** and **sustainable** management.



2026

From  
2015

Connected countries

+ 80

Connected farms

+ 21.500

Connected devices

+ 50k

The platform processes **millions of records every year**, transforming operational data into technical, economic and administrative decisions for thousands of livestock farmers.

# What do we do?



## What do we do?

Digitanimal **detects and records** what happens with livestock and across the land, generating clear insights to help farmers manage their operations more effectively.

# What do we bring to the business?



# What do we bring to the business?

Our technology enables farmers to:

- 01 **More visibility, less uncertainty**
- 02 **Better decisions, less guesswork**
- 03 **Better organization, less admin burden**
- 04 **Greater profitability, with sustainability**



# What do we bring to the business?

Our technology enables farmers to:

## 01 More visibility, less uncertainty

Continuous tracking and monitoring of livestock to know where animals are and what is happening at all times.

## 02 Better decisions, less guesswork

## 03 Better organization, less admin burden

## 04 Greater profitability, with sustainability



# What do we bring to the business?

Our technology enables farmers to:

01 More visibility, less uncertainty

02 **Better decisions, less guesswork**

Data is transformed into reports, alerts and recommendations helping farmers anticipate issues and improve productivity.

03 Better organization, less admin burden

04 Greater profitability, with sustainability



# What do we bring to the business?

Our technology enables farmers to:

- 01 More visibility, less uncertainty
- 02 Better decisions, less guesswork
- 03 Better organization, less admin burden**

Structured records that simplify traceability, regulatory compliance and interactions with authorities.

- 04 Greater profitability, with sustainability



# What do we bring to the business?

Our technology enables farmers to:

- 01 More visibility, less uncertainty
- 02 Better decisions, less guesswork
- 03 Better organization, less admin burden
- 04 Greater profitability, with sustainability**

Optimization of pasture use and livestock performance to improve profitability without compromising soil health.



# How do we do it?



# How do we do it?

## INTELLIGENCE APPLIED TO LIVESTOCK DATA

Advanced algorithms that analyze behaviour, real growth (Average Daily Gain), detect anomalies and support proactive decision-making..



## INTELLIGENT FARM MANAGEMENT SYSTEM

Centralizes farm information into a single platform and turns it into actionable insights.



## CONNECTIVITY ADAPTED TO EVERY ENVIRONMENT



GPS collars and virtual fencing powered by mobile, IoT and satellite networks. Multi-network connectivity designed to maximize coverage.  
**GSM 2G + Sigfox + LoRa + NB-IoT**

## DEVICES ADAPTED TO REAL FIELD CONDITIONS



**Robust hardware**, with extended battery life and continuous operation under demanding conditions – **IP68**

# Digitanimal ecosystem



# Digitanimal Ecosystem

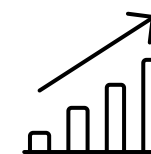
Digitanimal connects what happens in the field with the daily management of the farm



**DATA**



**INSIGHTS**



**PROFITABILITY**

# Digitanimal Ecosystem

Digitanimal connects what happens in the field with the daily management of the farm



## FIELD DATA CAPTURE

**Location data and activity monitoring**, growth and land use collected directly from the animal and its environment. In real time.



## PROCESSING AND APPLIED INTELLIGENCE

**Analysis** of behaviour, productive performance and land-use patterns to transform data into **structured information**.



## TECHNICAL AND ECONOMIC DECISION-MAKING

**Organized information** to act on time, optimize resources, ensure compliance and improve **profitability**.

# From data to decision

Digitanimal ecosystem value architecture

**DATA  
SOURCES**  
(INPUTS)



**APPLIED  
INTELLIGENCE**  
(PROCESSING)



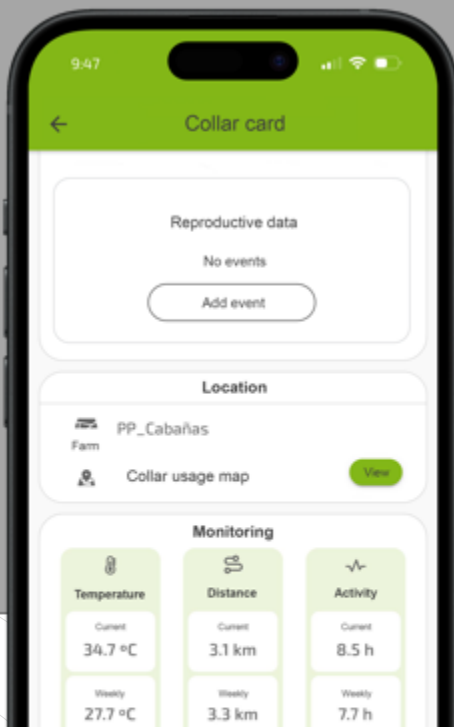
**VALUE  
RECIPIENTS**  
(OUTPUTS)



# From data to decision

Digitanimal ecosystem value architecture

## DATA SOURCES (INPUTS)



### ANIMAL (BIOMETRICS)

GPS · Activity · Temperature  
Heat and calving detection

### FARM INFRASTRUCTURE

Smart Scales  
Virtual fencing  
Pasture management

### EXTERNAL SOURCES

SIGPAC · Livestock census  
Traceability · NDVI · land use

### USER / FARMER

Treatment records  
Movements · Reproductive events

## APPLIED INTELLIGENCE (PROCESSING)



## VALUE RECIPIENTS (OUTPUTS)



# From data to decision

Digitanimal ecosystem value architecture

## APPLIED INTELLIGENCE (PROCESSING)



DATA  
SOURCES  
(INPUTS)



### CONNECTIVITY ENGINE

Hybrid rural coverage (GSM, LoRa, Sigfox, Satélite) –  
Automatic network selection (device-based)

### LIVESTOCK DATA ENGINE

Verifiable farm records  
Operational management and admin compliance  
Traceability – Auditing – Certification – CAP

### INTELLIGENCE ENGINE

Production and reproductive algorithms (KPIs,  
benchmarking)  
Predictive models (ADG, health, reproduction)

VALUE  
RECIPIENTS  
(OUTPUTS)



# From data to decision

Digitanimal ecosystem value architecture

DATA  
SOURCES  
(INPUTS)



APPLIED  
INTELLIGENCE  
(PROCESSING)



VALUE  
RECIPIENTS  
(OUTPUTS)



## FARMER

Improved productivity, better animal health, reduced workload, increased profitability

## PUBLIC ADMINISTRATIONS

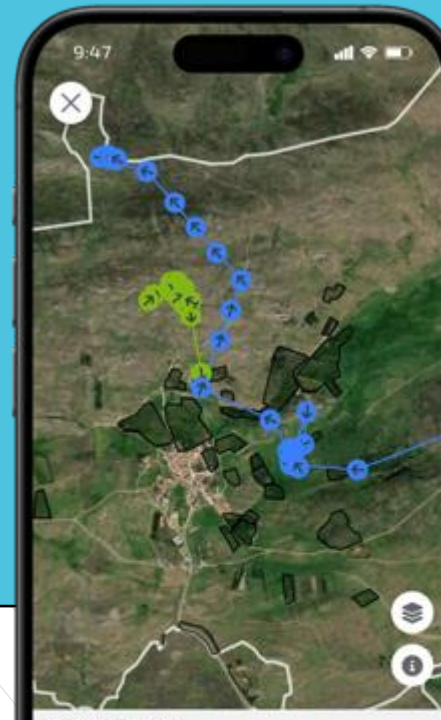
Livestock monitoring (territory, CAP, wildfires)  
Simplified procedures and audits

## MANAGER / COOPERATIVE

Multi-farm management  
Production benchmarking

## VALUE CHAIN

Origin certification and traceability  
Differentiated market positioning based on animal welfare and data



# Competitive advantages

Digitanimal is not a single device, but an **integrated infrastructure** for **data capture, intelligence and management** designed for extensive livestock farming and modern animal production systems.



## FIELD DATA CAPTURE

Collars, field sensors and infrastructure devices that capture what happens on the farm in real time.

## INTELLIGENCE APPLIED TO LIVESTOCK DATA

Algorithms that transform operational data into alerts, performance indicators and recommendations.

## INTEGRATED MANAGEMENT SYSTEM

The Datanimal platform brings together technical, production and administrative data into a single decision-making tool.

## SCALABLE ARCHITECTURE

Designed for farmers, cooperatives, technicians and public administrations.

# Technology designed to support farmers



# Digitanimal Products

## DATA CAPTURE

**Localization and monitoring collars** that record the livestock's position and activity, providing continuous visibility even in remote environments.



## PRODUCTIVITY CONTROL

Automatic weighing system through a **smart scale** that monitors the growth of livestock in feedlots, enabling the evaluation of average daily weight gain and optimizing feeding and sales decisions.



## DATANIMAL PLATFORM



The technical and economic **management hub** that integrates administrative data, livestock records, and official data sources.

## TERRITORY MANAGEMENT



**Virtual fencing technology** that allows the definition of digital enclosures and the management of livestock movement without physical fences, facilitating pasture rotation and land management.

# Datanimal Platform

The digital memory of the livestock operation

## WHAT IS IT?

A system for **data collection, analysis and visualization** designed to support decision-making and improve the economic performance of the farm by consolidating animal evolution and events with the farmer's accumulated knowledge.

- Complete animal history: reproductive events, genealogy, and health records.
- Technical and economic livestock management, risk prevention, improved decision-making, and profitability.

## BENEFITS

### For farmers and cooperatives:

- Simplified administrative management
- Always up-to date inventory

## HOW DOES IT WORK?

Datanimal centralizes farm information from data automatically incorporated from official records or registered directly in the field.

### Official Data

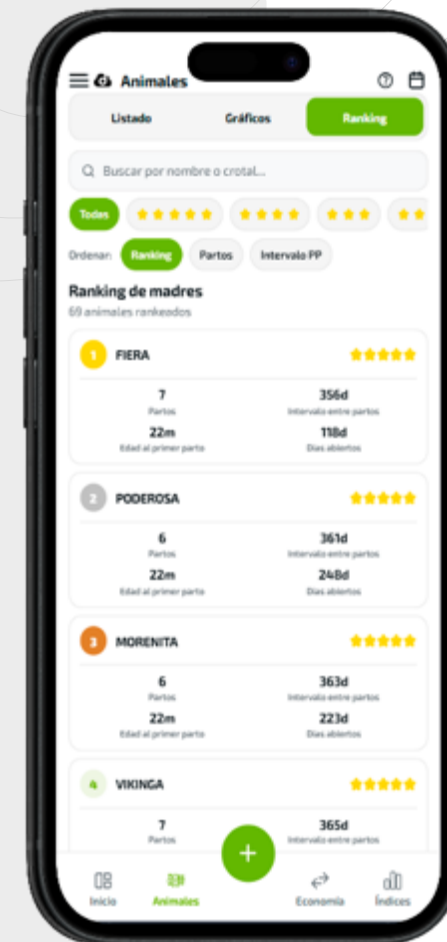
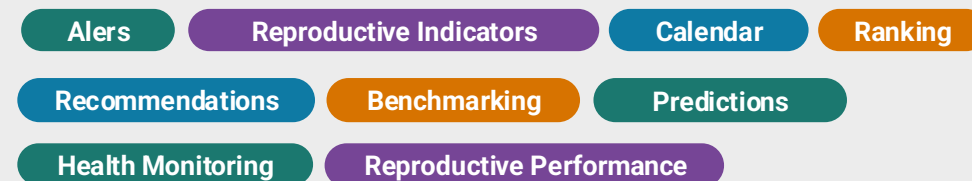
- Livestock census
- Administrative records

### Farm Data

- Helath
- Reproduction
- Incidents

### Market Data

- Market prices



- Productivity benchmarking and technical advisory
- Integration with veterinarians and technicians
- Easy and automatic integration with Livestock Traceability Systems

# Data capture

Localization and monitoring collars (EVO / ECO / SAT).

## WHAT IS IT?

**The primary source of information for extensive livestock farming and remote environments.**

The collars provide location, activity, and other operational indicators that improve visibility into livestock behaviour, detect anomalies, and continuously feed the management system with real-time field data

## BENEFITS

- Early anomaly detection
- Optimization of operational management and feeding systems using real territorial data, even in extensive or remote areas.

## HOPW DOES IT WORK?

### EVO

Standard device with replaceable battery, adaptable terrestrial connectivity (Sigfox, NB-IoT, GSM, or LoRa), and configurable data transmission according to farm needs, operating under an annual licensing model.



### ECO

A device that enhances autonomy through solar charging and terrestrial connectivity, reducing maintenance needs and enabling continuous operations during long operating periods, with a design that maximizes energy efficiency and supports extended deployments in extensive environments.



### SAT

The device combines terrestrial NB-IoT and satellite NB-NTN connectivity, ensuring continuous telemetry and location transmission even in remote or low-coverage areas. This hybrid architecture guarantees reliable operations in geographically complex territories.



# Territory management

## Virtual fencing

### WHAT IS IT?

Technology that enables dynamic grazing management without physical infrastructure, directly from a mobile app.

In partnership with:



### HOW DOES IT WORK?

The remote grazing system uses GPS technology and solar energy to guide animals through progressive audio cues when they approach the boundary of the enclosure, enabling pasture control and efficient rotation planning

Through digitally defined enclosures configured from the application, livestock movement can be managed without the need for physical fencing, enabling flexible territory management.



### BENEFITS

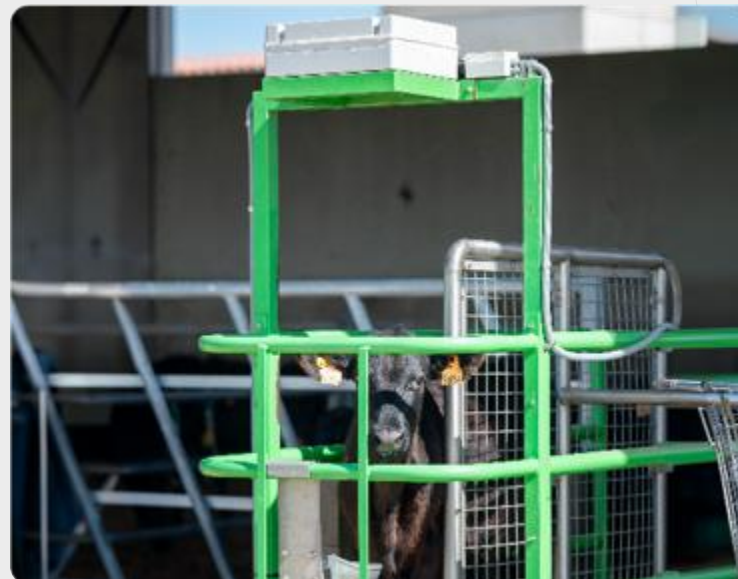
- **Flexible territory management**  
Definition and modification of enclosures from the application without installing physical fences.
- **Grazing optimization**  
Planned livestock rotation to improve pasture utilization.
- **Behaviour monitoring**  
Movement history and land usage analysis to identify grazing patterns
- **Regenerative livestock farming**  
A key tool for implementing regenerative grazing models and improving soil health.

# Productive control

## Smart scale

### WHAT IS IT?

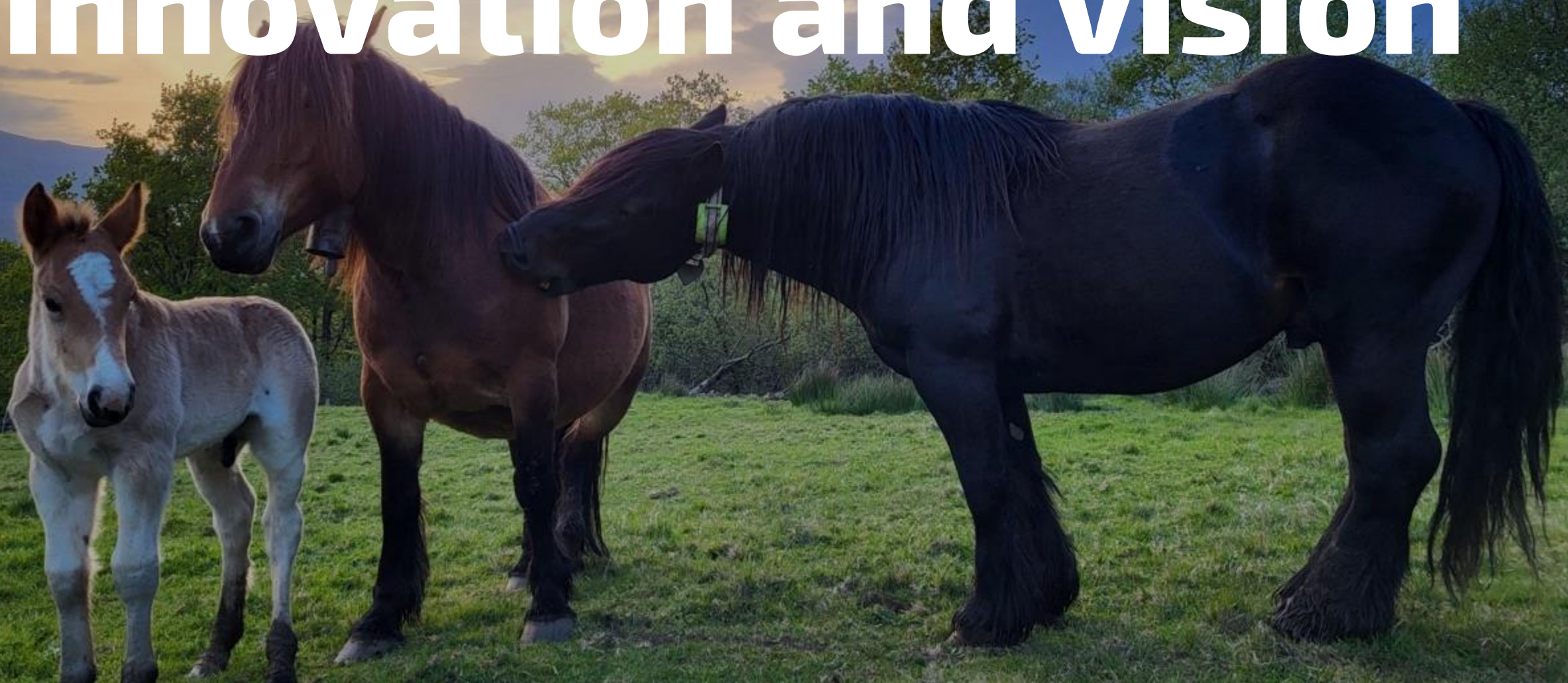
The Digital animal smart scale automatically measures animal weight and monitors productivity over time without stress or constant handling.



### BENEFITS

- **Individual growth tracking**  
Automatic monitoring of weight and development for each animal or batch.
- **Average Daily Gain (ADG) calculation**  
Identification of animals with better feed conversion efficiency.
- **Sales timing optimization**  
Detection of the optimal market exit point.
- **Productivity and health alerts**  
Early identification of animals that stop gaining weight or display abnormal behaviors.

# Commitment, innovation and vision



# Commitment, innovation and vision

At Digitanimal, we have spent **more than 10 years** building technological infrastructure for data-driven livestock management.



**Innovation in rural infrastructure and global connectivity**



**Transparency and responsible consumption - "Farm-to-Fork" traceability**



**Leadership in climate action – Algorithms for decarbonization**



**Preservation of terrestrial ecosystems and biodiversity**



# Compromiso, innovación y visión



**Innovation in rural infrastructure and global connectivity**



**Transparency and responsible consumption - "Farm-to-Fork" traceability**



**Leadership in climate action – Algorithms for decarbonization**



**Preservation of terrestrial ecosystems and biodiversity**

**EFFECTIVE  
DIGITALIZATION IN LOW-  
CONNECTIVITY  
ENVIRONMENTS.**

***Projects:***

*STEPLA PLUS (H2020)*

*CATSET (Eurostars)*

*CICYTEX-INTEGAN*

# Compromiso, innovación y visión



Innovation in rural infrastructure and global connectivity



Transparency and responsible consumption - "Farm-to-Fork" traceability



Leadership in climate action – Algorithms for decarbonization



Preservation of terrestrial ecosystems and biodiversity

DIGITAL TRACEABILITY  
AND GENERATION OF  
VERIFIABLE  
INFORMATION.

*Projects:*

*CATTLECHAIN 4.0 (H2020)*

*GO BOVIEX 4.0*

*Herencia Wagyu*

# Compromiso, innovación y visión



**Innovation in rural infrastructure and global connectivity**



**Transparency and responsible consumption - "Farm-to-Fork" traceability**



**Leadership in climate action – Algorithms for decarbonization**



**Preservation of terrestrial ecosystems and biodiversity**

**AI-DRIVEN TOOLS TO  
REDUCE THE CARBON  
FOOTPRINT OF  
EXTENSIVE LIVESTOCK  
FARMING**

*Projects:*

*AIREGAN*

*AILIVE4ENV*

*DigiGanademad*

# Compromiso, innovación y visión



**Innovation in rural infrastructure and global connectivity**



**Transparency and responsible consumption - "Farm-to-Fork" traceability**



**Leadership in climate action – Algorithms for decarbonization**



**Preservation of terrestrial ecosystems and biodiversity**

**TECHNOLOGY SERVING  
REGENERATIVE  
LIVESTOCK FARMING  
AND SOIL HEALTH**

*Projects:*

*CICYTEX*

*GO BOVIEX 4.0*

*AIREGAN*

*AILIVE4ENV*

# An innovative and collaborative ecosystem

## EU Programs



## National Programs



## Centers and Universities



## Sectors and Demos



# Operating in more than 80 countries



*"Of course, it saves on diesel, but above all it saves time. In our sector, time has never been truly valued, yet it is essential"*

**ASHLEY MATTER**  
Goss Moor NNR (UK)




*"Trying to find more than 100 animals every day in the field was not feasible. Now, thanks to Digitanimal, I know where they are and how they are doing at all times"*


**MIGUEL ÁNGEL VELASCO**  
Cumbres del Guadarrama (ESP)



*"When a farmer gains both utility and control of their own data... magic happens. The insights into lambing gained in just 24 hours since being handed the 'keys' are set to change how we manage our ewes. This journey with Digitanimal is getting exciting"*

**BELINDA LAY**  
Cooling Down Farm (AUS)

 Headquarter

 Core markets

 Market presence

# The people behind Digitanimal

We are engineers, developers, agronomists, and data specialists united by one simple idea: technology should support farmers, not replace them.



**Built in the field, for the field,** we work to transform what happens on the farm into useful information to improve management, reduce uncertainty, and enable more profitable and sustainable livestock farming.

**We are not here to change livestock farming...**

**...we are here to help manage it better,  
respecting the craft, the accumulated  
knowledge, and the reality of those who  
work in the field every day**



**Thanks**



**EMAIL:**

[info@digitanimal.com](mailto:info@digitanimal.com)

[ccallejero@digitanimal.com](mailto:ccallejero@digitanimal.com)

**DIRECCIÓN:**

Avenida de Castilla, 1 – Oficina 7B, 28830,  
San Fernando de Henares, Madrid, Spain.

